



# DYLOX®

ACCEPTED  
FOR REGISTRATION

May 7, 2025

New York State Department  
of Environmental Conservation  
Division of Materials Management  
Pesticide Product Registration

## 6.2 Granular Insecticide

DOC ID# 599284

**GROUP 1B INSECTICIDE**

**For Control of White Grubs, Mole Crickets, Sod Webworms,  
Cutworms, and Other Listed Pests of Turfgrass  
Controls damaging insects below the soil surface**

**Provides control of Japanese beetle grubs**

**ACTIVE INGREDIENT:**

Trichlorfon, Dimethyl (2,2,2-trichloro-  
1-hydroxy-ethyl)phosphonate ..... **6.2%**

**OTHER INGREDIENTS:..... 93.8%**

**TOTAL: 100.0%**

**STORE IN A DRY PLACE**

**Treats 10,000 sq ft for White Grubs and Mole Crickets**

**Treats 15,000 sq ft for Sod Webworms**

**EPA Reg. No. 5481-641-101563**

**EPA Est. No.: When the 7th and 8th characters of the lot number= AX, the Est No is 5481-AL-1**

**When the 3rd and 4th characters of the lot number= 77, the Est No is 070989-M0-001**

**STOP - READ THE LABEL BEFORE USE.  
KEEP OUT OF REACH OF CHILDREN.**

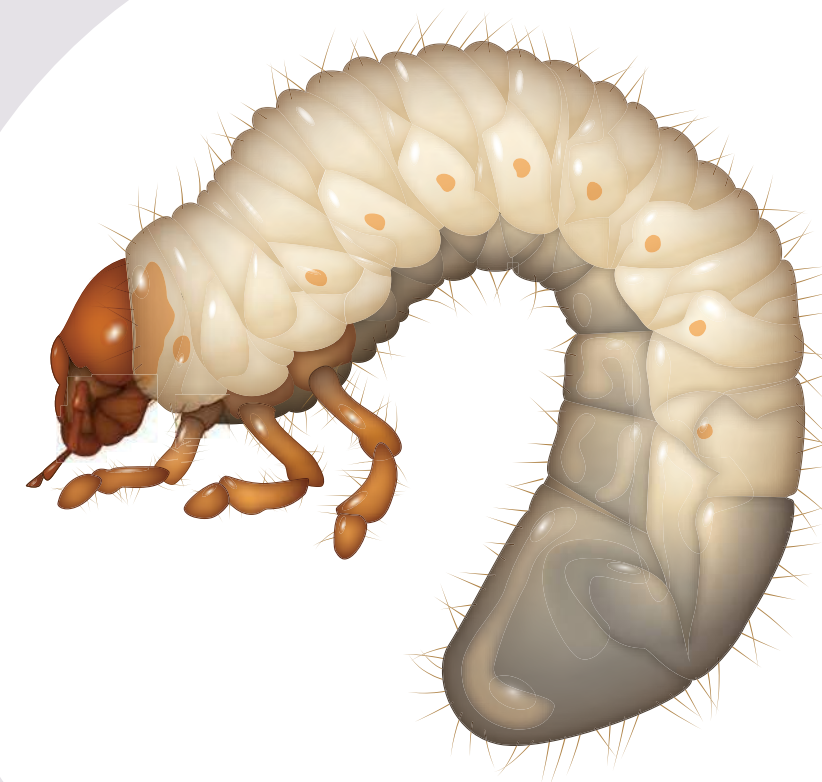
## **CAUTION**

**PARA EL USUARIO: Si usted no lee o entiende inglés, no use este producto hasta que le hayan explicado completamente las instrucciones que figuran en la etiqueta.**

**(TO THE USER: If you cannot read or understand English, do not use this product until the label has been fully explained to you.)**

**For MEDICAL and TRANSPORTATION Emergencies ONLY Call 24 Hours A Day 1-800-424-9300  
For PRODUCT USE Information Call 1-800-331-2867**

<b>FIRST AID</b>	
<b>Contains an organophosphate that inhibits cholinesterase.</b>	
<b>If swallowed:</b>	<ul style="list-style-type: none"><li>• Call a poison control center or doctor immediately for treatment advice.</li><li>• Have person sip a glass of water if able to swallow.</li><li>• Do not induce vomiting unless told to do so by a poison control center or doctor.</li><li>• Do not give anything to an unconscious person.</li></ul>
<b>If in eyes:</b>	<ul style="list-style-type: none"><li>• Hold eye open and rinse slowly and gently with water for 15 - 20 minutes. Remove contact lenses, if present, after the first 5 minutes, then continue rinsing.</li><li>• Call a poison control center or doctor for treatment advice.</li></ul>
Have the product container or label with you when calling a poison control center or doctor or going for treatment. The Environmental Science U.S., LLC Emergency Response Telephone No. is 1-800-424-9300.	
<b>Note To Physician:</b> Prolonged exposure will cause cholinesterase depression. Atropine Sulfate is antidotal. 2-PAM is also antidotal and may be administered in conjunction with atropine.	



**Net Contents  
30 Pounds**

**SKU #D00001040**

**DPM00000709A 190612AV2**



**White Grubs**

**14164-20150120a**



**DYLOX<sup>®</sup>**

**6.2 Granular Insecticide**

## PRECAUTIONARY STATEMENTS

### HAZARDS TO HUMANS AND DOMESTIC ANIMALS

#### CAUTION

Harmful if swallowed. Causes moderate eye irritation. Do not take internally. Do not breathe dust. Avoid contact with eyes, skin, or clothing. Prolonged or frequently repeated skin contact may cause allergic reactions in some people.

#### PERSONAL PROTECTIVE EQUIPMENT (PPE)

**Mixers, Loaders, Applicators and other handlers must wear:**

- Long-sleeved shirt and long pants
- Shoes plus socks

Follow manufacturer's instructions for cleaning/ maintaining PPE. If no such instructions for washables exist, use detergent and hot water. Keep and wash PPE separately from other laundry.

### USER SAFETY RECOMMENDATIONS

#### Users should:

- Wash hands before eating, drinking, chewing gum, using tobacco, or using the toilet.
- Remove clothing/PPE immediately if pesticide gets inside. Then wash thoroughly and put on clean clothing.
- Remove PPE immediately after handling this product. Wash outside of gloves before removing. As soon as possible, wash thoroughly and change into clean clothing.

### ENVIRONMENTAL HAZARDS

This product is toxic to fish, birds, and wildlife. Do not apply directly to water. Do not contaminate water by cleaning of equipment or disposal of wastes. Do not apply when turf grass areas are water-logged or the soil is saturated with water (i.e. will not allow penetration into the root zone of the plant). Avoid run-off or puddling of irrigation water following application.

To protect the environment, do not allow pesticide to enter or run off into storm drains, drainage ditches, gutters, or surface waters. Applying this product in calm weather when rain is not predicted for the next 24 hours will help to ensure that wind or rain does not blow or wash pesticide off the treatment area. Sweeping any product that lands on a driveway, sidewalk, or street, back onto the treated area of the lawn or garden will help to prevent run off to water bodies or drainage systems.

Use only as directed on this label. Do not use on crops used for food or forage.

### DIRECTIONS FOR USE

**It is a violation of Federal law to use this product in a manner inconsistent with its labeling. IMPORTANT:** Read these entire Directions for Use before using DYLOX 6.2 Granular Insecticide. **Do not use on turf being grown for sale or other commercial use as sod, or for commercial seed production or for research purposes except for research involving use of this product that is consistent with this label.**

### ENTRY RESTRICTIONS

Do not enter or allow others to enter the treated area (except those persons involved in the incorporation) until the incorporation is complete. Incorporation is to be accomplished by watering-in. Do not enter or allow others to enter the treated area until the surface is dry after the watering-in. For home lawns, notify the property owner that he or she must water-in the product promptly or within the same day.

### RESTRICTIONS

- Do not apply this product in a way that will contact workers or other persons, either directly or through drift.
- Only protected handlers may be in the area during application.
- Aerial application is prohibited.
- Use this product only on the turf sites permitted by this label.
- Do not apply this product using hand-held or chest-mounted spreaders.
- The applicator must water-in the product after application or notify the property owner that he or she must water-in after application on the same day.
- Limit the number of applications to turf to 3 per calendar year with minimum retreatment intervals of 7 days.
- Limit the total of all applications to 24.5 lbs of active ingredient (395 lbs of product) per acre per year for controlling mole crickets and grubs and to 16.2 lbs of active ingredient (261 lbs of product) per acre per year for controlling surface feeding insects.
- Apply this product directly to the lawn or garden area. Water treated area as directed on this label.
- Do not water to the point of run-off. Do not make applications during rain.
- Application is prohibited directly into sewers or drains, or to any area like a gutter where drainage to sewers, storm drains, water bodies, or aquatic habitat can occur. Do not allow the product to enter any drain during or after application.

## ADDITIONAL RESTRICTIONS FOR TURF ON GOLF COURSES

- Do not apply within 25 feet of lakes, reservoirs, rivers, permanent streams, marshes, natural ponds, or estuaries.
- Broadcast use is limited to tees and greens. Use on fairways is limited to spot treatments.
- Post-application watering-in is mandatory.

## PRODUCT SPECIFICATIONS

<b>DYLOX® 6.2 GRANULAR INSECTICIDE</b>	<ul style="list-style-type: none"><li>• Granular Insecticide containing 6.2% trichlorfon</li></ul>
<b>CONTROLS</b>	<ul style="list-style-type: none"><li>• White Grub Larvae (such as larvae of Asiatic garden beetle, black turfgrass atenioides, European chafer, green June beetle, Japanese beetle, (<i>Aphodius</i> spp.), May or June beetles (<i>Phyllophaga</i> spp.), northern and southern masked chafers (<i>Cyclocephala</i> spp.), oriental beetle and sugarcane grubs (<i>Tomarus</i> spp.))</li><li>• Mole crickets</li><li>• Annual bluegrass weevil</li><li>• Billbug larvae</li><li>• Sod webworms and cranberry girdler</li><li>• Cutworms and armyworms</li><li>• Chinch bugs</li></ul>
<b>WHERE TO APPLY</b>	<ul style="list-style-type: none"><li>• All types of turf where pests have been seen or found excluding turf where application is not allowed. See IMPORTANT: above.</li></ul>
<b>COVERAGE</b>	<ul style="list-style-type: none"><li>• One bag (30 lbs) will treat 10,000 sq ft for white grubs, annual bluegrass weevil, chinch bugs, cranberry girdler, and mole crickets.</li><li>• One bag (30 lbs) will treat 15,000 sq ft for sod webworms, armyworms, and cutworms.</li></ul>
<b>HOW TO APPLY</b>	<ul style="list-style-type: none"><li>• Do not apply with hand-held or chest-mounted spreader.</li><li>• Apply granules using a broadcast or drop type spreader.</li></ul>
<b>QUESTIONS</b>	For questions or comments, call toll free 1 (800) 331-2867.

## SURFACE FEEDING INSECTS

Sod webworm, cranberry girdler, cutworm, and armyworm

<b>Use Rate</b>	<ul style="list-style-type: none"><li>• 2-3 pounds per 1,000 sq. ft. of turf.</li><li>• Refer to chart for spreader settings (Make sure your spreader is calibrated for this product before application).</li></ul>
<b>How to Apply</b>	<ul style="list-style-type: none"><li>• For properly managed turf remove excessive thatch, which encourages insects. Rake or de-thatch the area and remove the debris to expose insect hiding places.</li><li>• Water the turf and cut to proper height.</li><li>• Apply granules with a broadcast or drop type spreader.</li><li>• To release the active ingredient from the granule, the applicator must water-in after application or notify the property owner that he or she must water-in, on the same day as application, with sufficient water to thoroughly wet the remaining thatch. If sufficient rainfall to thoroughly wet the thatch occurs after application but before watering-in, additional watering-in is not required.</li></ul>
<b>When to Apply</b>	<ul style="list-style-type: none"><li>• Treat when the insects are present.</li><li>• To control multiple generations of sod webworm larvae, additional treatments at 30- to 40-day intervals during the summer months may be required. Do not make more than 3 applications per calendar year.</li></ul>

Apply Dylox 6.2 Granular Insecticide uniformly over the area being treated with normally used granular application equipment. Both drop-type and rotary-type spreaders may be used to apply Dylox 6.2 Granular Insecticide. Do not use spreaders that would apply the material in concentrated bands. Calibrate application equipment prior to use according to the manufacturer's directions. Check frequently to be sure equipment is working properly and distributing granules uniformly and accurately.

## Spreader Settings 2 pounds per 1,000 sq ft

SPREADER	SETTING	SPREADER	SETTING
Cyclone Pro	4	Scott's R7X	H
Cyclone-Roto	3	Spyker Pro	4
Lely Broadcast	2.5	Greenview (Model 105)	6.5
Lesco Rotary	11	Earthway (Model 2600)	8
Prize CB85, CB T85	4.5	Sears Broadcast	3.5
Scott's Drop	4	Sears Drop	6
<b>(30 pounds will treat 15,000 sq ft at this rate)</b>			

## Spreader Settings 3 lb/1,000 sq ft

SPREADER	SETTING	SPREADER	SETTING
Cyclone Pro	4.75	Scott's R7X	J
Cyclone-Roto	3.5	Spyker Pro	4.7
Lely Broadcast	2.9	Greenview (Model 105)	7.5
Lesco Rotary	14	Earthway (Model 2600)	10
Prize CB85, CB T85	5	Sears Broadcast	4
Scott's Drop	4.5	Sears Drop	7
<b>(30 pounds will treat 10,000 sq ft at this rate)</b>			

## ROOT FEEDING INSECTS

<p>annual bluegrass weevil (larvae) Billbugs (larvae) cranberry girdler mole crickets chinch bugs</p>	<p><u>white grub larvae</u>: larvae of Asiatic garden beetle, black turfgrass ataenius, European chafer, green June beetle, Japanese beetle, (<i>Aphodius</i> spp.), May or June beetles (<i>Phyllophaga</i> spp.), northern &amp; southern masked chafers (<i>Cyclocephala</i> spp.), Oriental beetle, and sugarcane grubs (<i>Tomarus</i> spp.)</p>
<b>Use Rate</b>	<ul style="list-style-type: none"> <li>• 3 pounds per 1,000 sq ft of turf.</li> <li>• Refer to chart for spreader settings (Make sure your spreader is calibrated for this product before application).</li> </ul>
<b>How to Apply</b>	<ul style="list-style-type: none"> <li>• Ensure that there is no more than 1/2 inch of thatch present at time of application. Under dry conditions, prewater prior to application for control of white grub and weevil larvae.</li> <li>• Water the turf and cut to proper height.</li> <li>• Apply granules with a broadcast or drop type spreader.</li> <li>• The applicator must water-in after application or notify the property owner that he or she must water-in, on the same day as application, with sufficient water to thoroughly wet the remaining thatch and move the product to the root zone. If sufficient rainfall to thoroughly wet the thatch occurs after application but before watering-in, additional watering-in is not required.</li> </ul>
<b>When to Apply</b>	<ul style="list-style-type: none"> <li>• Apply when pests are present.</li> <li>• Consult your Agricultural Extension Service for the best time to treat in your area.</li> <li>• A second treatment may be needed for mature large sized grubs.</li> </ul>

## STORAGE AND DISPOSAL

Do not contaminate water, food, or feed by storage or disposal.

<b>PESTICIDE STORAGE:</b>	<ul style="list-style-type: none"><li>• Store in its original container in a cool, dry, locked place out of reach of children.</li></ul>
<b>PESTICIDE DISPOSAL:</b>	<ul style="list-style-type: none"><li>• Wastes resulting from the use of this product may be disposed of on site or at an approved waste disposal facility.</li></ul>
<b>CONTAINER HANDLING:</b>	<ul style="list-style-type: none"><li>• Nonrefillable container. Do not reuse or refill this container. Completely empty bag into application equipment. Offer for recycling, if available or dispose of empty bag in a sanitary landfill.</li></ul>

### IMPORTANT: READ BEFORE USE

Read the entire Directions for Use, Conditions, Disclaimer of Warranties and Limitations of Liability before using this product.

If terms are not acceptable, return the unopened product container at once. By using this product, user or buyer accepts the following Conditions, Disclaimer of Warranties and Limitations of Liability.

**CONDITIONS:** The directions for use of this product are believed to be adequate and must be followed carefully. However, because of manner of use and other factors beyond Environmental Science U.S., LLC's control it is impossible for Environmental Science U.S., LLC to eliminate all risks associated with the use of this product. As a result, crop injury or ineffectiveness is always possible. All such risks shall be assumed by the user or buyer.

**DISCLAIMER OF WARRANTIES:** TO THE EXTENT CONSISTENT WITH APPLICABLE LAW, ENVIRONMENTAL SCIENCE U.S., LLC MAKES NO OTHER WARRANTIES, EXPRESS OR IMPLIED, OF MERCHANTABILITY OR OF FITNESS FOR A PARTICULAR PURPOSE OR OTHERWISE, THAT EXTEND BEYOND THE STATEMENTS MADE ON THIS LABEL. No agent of Environmental Science U.S., LLC is authorized to make any warranties beyond those contained herein or to modify the warranties contained herein. TO THE EXTENT CONSISTENT WITH APPLICABLE LAW, Environmental Science U.S., LLC disclaims any liability whatsoever for special, incidental or consequential damages, resulting from the use or handling of this product.

**LIMITATIONS OF LIABILITY:** TO THE EXTENT CONSISTENT WITH APPLICABLE LAW, THE EXCLUSIVE REMEDY OF THE USER OR BUYER FOR ANY AND ALL LOSSES, INJURIES OR DAMAGES RESULTING FROM THE USE OR HANDLING OF THIS PRODUCT, WHETHER IN CONTRACT, WARRANTY, TORT, NEGLIGENCE, STRICT LIABILITY OR OTHERWISE, SHALL NOT EXCEED THE PURCHASE PRICE PAID, OR AT ENVIRONMENTAL SCIENCE U.S., LLC'S ELECTION, THE REPLACEMENT OF PRODUCT.

Envu and the Envu logo are trademarks owned by Environmental Science U.S., LLC or one of its affiliates.

Dylox is a trademark owned by AMVAC Chemical Corporation and used under license.



**PRODUCED FOR**  
**Environmental Science U.S., LLC**  
**5000 CentreGreen Way, Suite 400**  
**Cary, NC 27513**



**DYLOX<sup>®</sup>**

**6.2 Granular Insecticide**